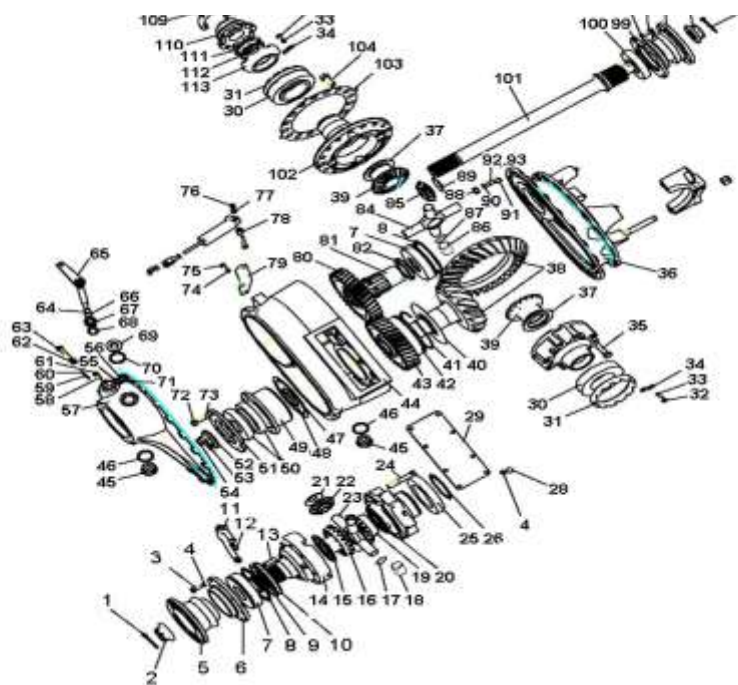


## 4. 中后桥/Rear Axles

序号/ No.	名 称 / Designation		页 码 /Page No.
4,01	双后驱动桥总成/Rear Tandem Drive Axle	-----	1
4,02	中桥驱动装置/1st Rear Axle Drive	-----	2
4,03	后桥驱动装置/Rear Axle Drive	-----	8
4,04	中桥桥壳/1st Rear Axle Housing	-----	10
4,05	后桥桥壳/ Rear Axle Housing	-----	12
4,06	后桥轮辋及制动器/Driving Axle Rim and Brake	-----	14

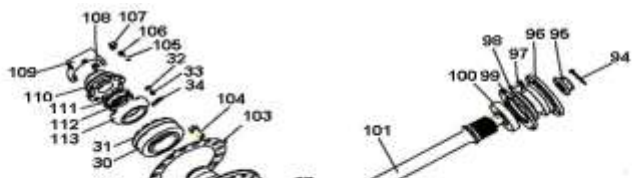


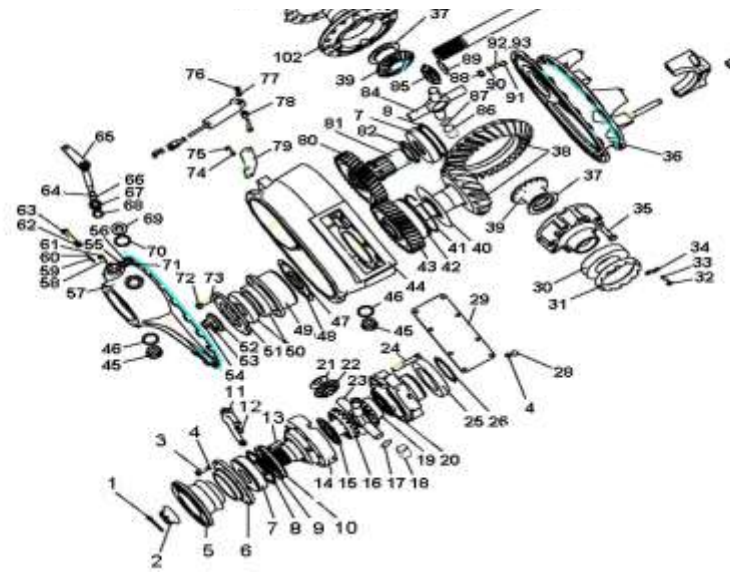


#### 4.02 中桥驱动装置 (i=4.42, XS φ180, 提升型) /Drive of 1st Rear Axle

序号 No.	零部件图号 Part No.	名称	Part Name	数量 Qty	备注 Remark
0	AZ9231320714	中桥中段(i=4.42, XSφ180)	1st rear axle drive ass.	1	
1	Q5005055	开口销	Split pin	1	
2	WG79000320013	凸缘螺母	Nut	1	
3	Q150B1025	六角头螺栓	Screw	8	
4	Q40310	弹簧垫圈	Spring washer	34	
5	AZ9231320014	XS φ180凸缘总成	Flange ass.	1	
6	WG9014320175	端盖	Cover	1	
7	190003311543	有止动槽的向心球轴承	Bearing	2	
8	Q433130	轴用压扁钢丝挡圈	Snap ring	2	
9	WG9014320061	轴间差速器壳垫片	Shim	1	
10	WG288 320105	差速锁锁环	Ring	1	
11	WG9014320053	拨叉	Fork	1	
12	WG1800 320077	拨叉活动块	Block	2	
13	WG288 320106	差速锁销	Pin	10	
14	AZ9231320271	差速器壳	Diff. housing	1	
15	AZ9231320091~95	半轴齿轮(前)垫片	Shim	n	Depend on demand
16	WG9231320225	前半轴齿轮	Gear	1	
17	WG9231320222	衬套挡圈	Snap ring	4	
18	WG9231320221	衬套	Bush	4	

#### 4.02 中桥驱动装置 (i=4.42, XS φ180, 提升型) /Drive of 1st Rear Axle

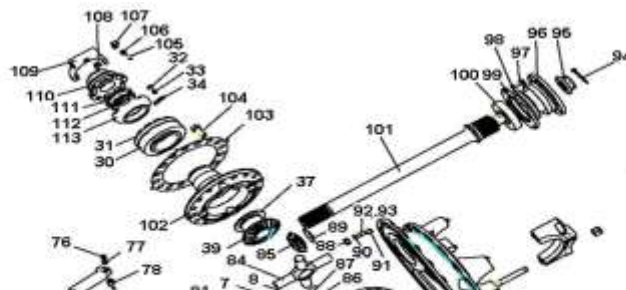


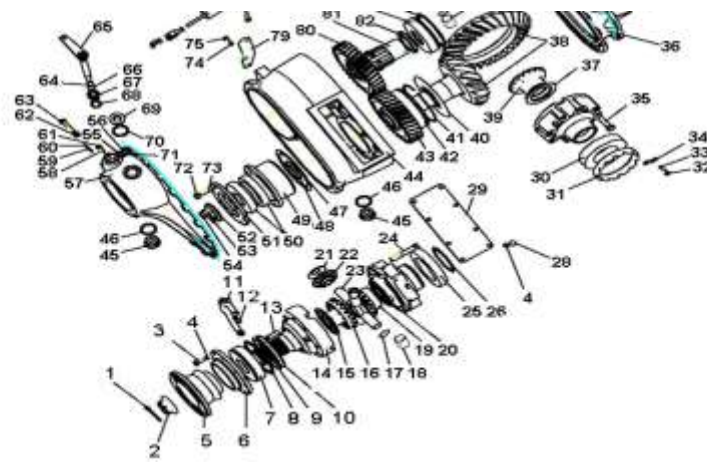


4.02 中桥驱动装置 (i=4.42, XS φ180, 提升型) /Drive of 1st Rear Axle

序号	零部件图号	名称	Part Name	数量	备注
No.	Part No.			Qty	Remark
19	WG9231320226	后半轴齿轮	Gear	1	
20	AZ9231320096~100	半轴齿轮(后)垫片	Shim	n	Depend on demand
21	WG9231320224	行星齿轮垫片	Shim	4	
22	WG9231320227	行星齿轮	Gear	4	
23	AZ9231320223	十字轴	Spider	1	
24	Q151C1280TF2	六角头螺栓	Screw	12	
25	190003310239	带防尘盖深沟球轴承	Ball bearing	1	
26	190003933580	轴用弹性挡圈	Circlip	1	
28	Q150B1020Q	六角头螺栓	Screw	8	
29	WG9014320118	接油板总成	Plate	1	
30	190003326148	圆锥滚子轴承	Roller bearing	2	
31	WG3809320159	差速器轴承调整螺母	Nut	2	
32	Q150B0816	六角头螺栓	Screw	2	
33	Q40308	弹簧垫圈	Spring washer	2	
34	WG79000320027	止动片	Retainer sheet	2	
35	WG9231320169	六角头螺栓	Screw	8	
36	WG9014320120	主减速器壳(中桥)	Reductor housing of 1st rear axle	1	
37	AZ9231320154~158	调整垫片	Adjust shim	n	Depend on demand
38	WG9114320251	锥齿轮副 28/17	Pinion and crown wheel	1	
39	WG9231320151	半轴齿轮	Gear	2	

4.02 中桥驱动装置 (i=4.42, XS φ180, 提升型) /Drive of 1st Rear Axle

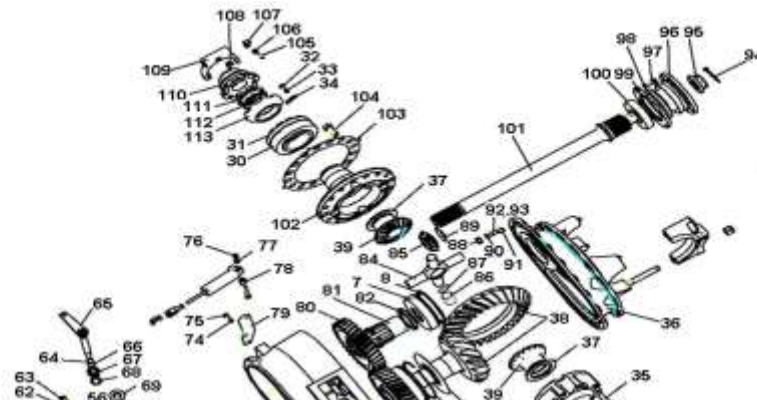


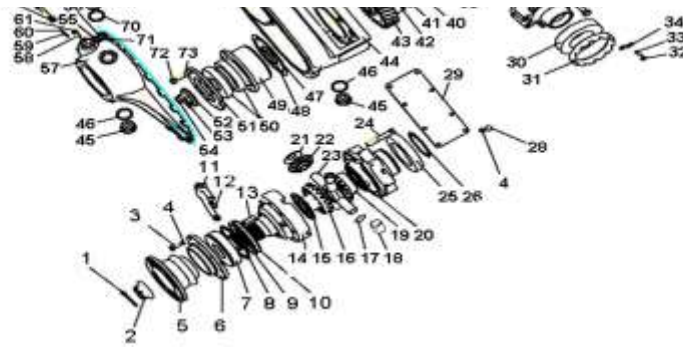


4.02 中桥驱动装置 (i=4.42, XS φ 180, 提升型) /Drive of 1st Rear Axle

序号	零部件图号	名称	Part Name	数量	备注
No.	Part No.			Qty	Remark
40	WG9014320174	挡油片	Plate	1	
41	WG9014320256	钢丝档圈	Snap ring	1	
42	WG9014320257	滚柱轴承	Roller bearing	1	
43	WG9114320001	从动圆柱齿轮z=27	Driven gear	1	
44	AZ9231320259	过桥箱	Housing	1	
45	1586 33 15	磁性螺塞总成	Plug	2	
46	Q72336	密封垫圈	Washer	3	
47	WG901432013-1	调整垫片	Shim	n	Depend on demand
48	WG9014320140	隔圈	Spacer Ring	1	
49	WG9014320129	轴承座	Bearing seat	1	
50	190003326333	圆锥滚子轴承	Roller bearing	2	
51	WG9014320128	轴承外环压板	Plate	1	
52	WG780 320088	轴承压板	Plate	1	
53	WG9114320002	防松锁片	Locking sheet	1	
54	Q150B1430TF2	六角头螺栓	Screw	3	
55	Q340B10	六角螺母	Nut	18	
56	Q1201028F3	双头螺柱	Stud	18	
57	AZ9231320264	过桥箱盖	Housing cover	1	
58	190003902070	开槽长圆柱端紧定螺钉	Screw	1	
59	WG69000330008	销	Pin	1	

4.02 中桥驱动装置 (i=4.42, XS φ 180, 提升型) /Drive of 1st Rear Axle

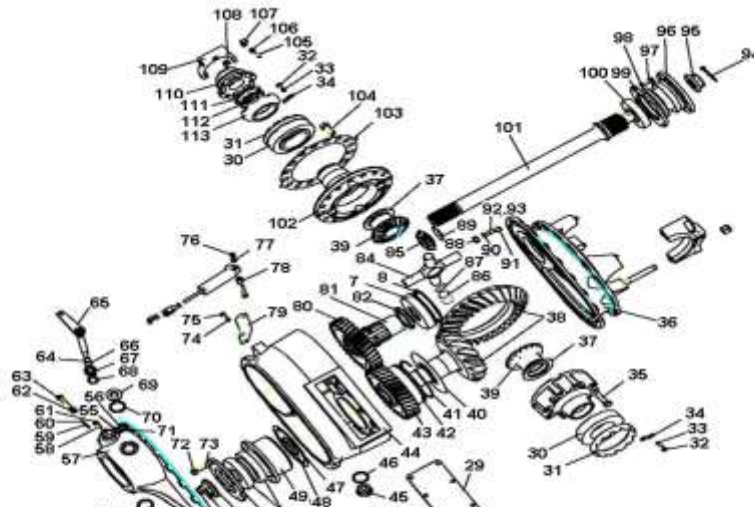


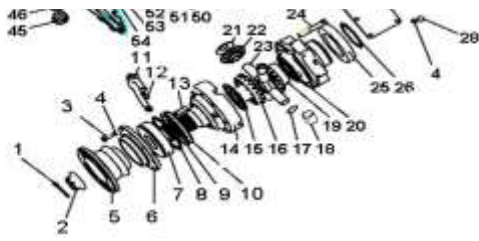


4.02 中桥驱动装置 (i=4.42, XS φ180, 提升型) /Drive of 1st Rear Axle

序号	零部件图号	名称	Part Name	数量	备注
No.	Part No.			Qty	Remark
60	Q43705	轴用钢丝挡圈	Circlip	1	
61	Q340B08	1型六角螺母	Nut	1	
62	Q340B10	六角螺母	Nut	1	
63	Q150B1050Q	六角头螺栓	Screw	1	
64	190003933072	轴用弹性挡圈	Circlip	1	
65	WG9014320076	差速锁摇臂总成	Rocker ass.	1	
66	WG288 730062	O型密封圈	O-ring	1	
67	WG2700 320037	衬套	Bush	1	
68	AZ9231320038	O形圈	O-ring	1	
69	WG81500010163	螺塞	Plug	1	
72	Q33210	六角锁紧螺母	Nut	8	
73	190003813543	双头螺栓	Stud	8	
74	Q40308	弹簧垫圈	Spring washer	2	
75	Q150B0818	六角头螺栓	Screw	2	
76	Q33208	六角锁紧螺母	Nut	1	
77	Q40108	平垫圈	Washer	1	
78	WG61000060072	隔套	Spacer sleeve	1	
79	AZ9231320262	托架总成	Bracket	1	
80	WG9214320002	主动圆柱齿轮z=35	Drive gear	1	
81	WG9014320135	空心轴	Hollow shaft	1	

4.02 中桥驱动装置 (i=4.42, XS φ180, 提升型) /Drive of 1st Rear Axle

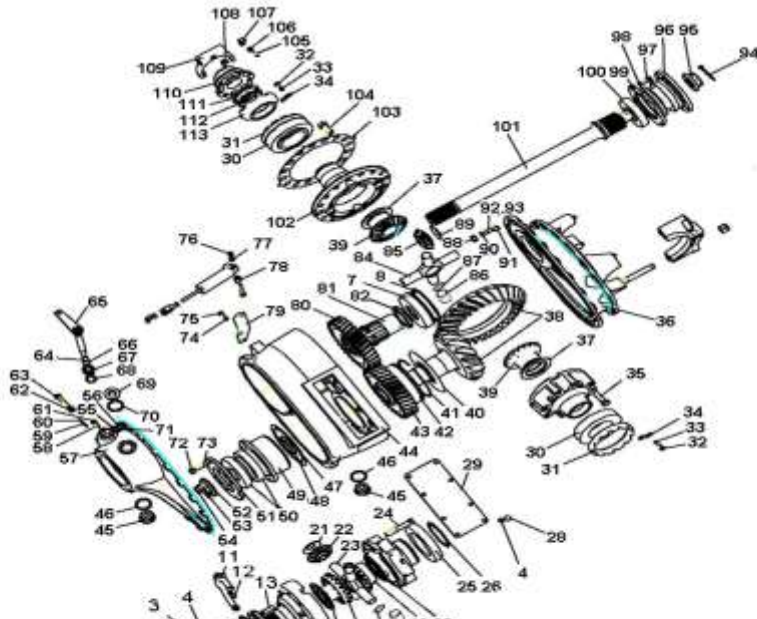




4.02 中桥驱动装置 (i=4.42, XS  $\phi$  180, 提升型) /Drive of 1st Rear Axle

序号	零部件图号	名称	Part Name	数量	备注
No.	Part No.			Qty	Remark
82	WG9012250031	开槽圆螺母	Nut	1	
84	AZ9231320150	十字轴	Spider	1	
85	WG9231320152	行星齿轮	Planetary Gear	4	
86	WG9231320160	衬套挡圈	Snap Ring	4	
87	WG9231320159	衬套	Bush	4	
88	Q340B12	I型六角头螺母	Nut	18	
89	WG9231320153	行星齿轮垫片	Shim	4	
90	Q40312	弹簧垫圈	Spring washer	18	
91	Q5211016	圆柱销	Cylinder pin	4	
92	190003813628	双头螺柱	Stud	14	
93	Q1201225F3	双头螺栓	Stud	4	
94	Q5005055	开口销	Split pin	1	
95	WG79000320013	凸缘螺母	Nut	1	
96	WG9231320205	$\Phi$ 165输出凸缘总成	Flange ass.	1	
97	Q150B1030	六角头螺栓	Screw	6	
98	Q40310	弹簧垫圈	Spring washer	6	
99	WG9231320141	轴承座	Bearing seat	1	
100	WG9231326212	双列圆锥滚子轴承	Roller bearing	1	
101	AZ9231320261	贯通轴	Through shaft	1	
102	AZ9231320272	差速器壳	Diff. housing	1	

4.02 中桥驱动装置 (i=4.42, XS  $\phi$  180, 提升型) /Drive of 1st Rear Axle

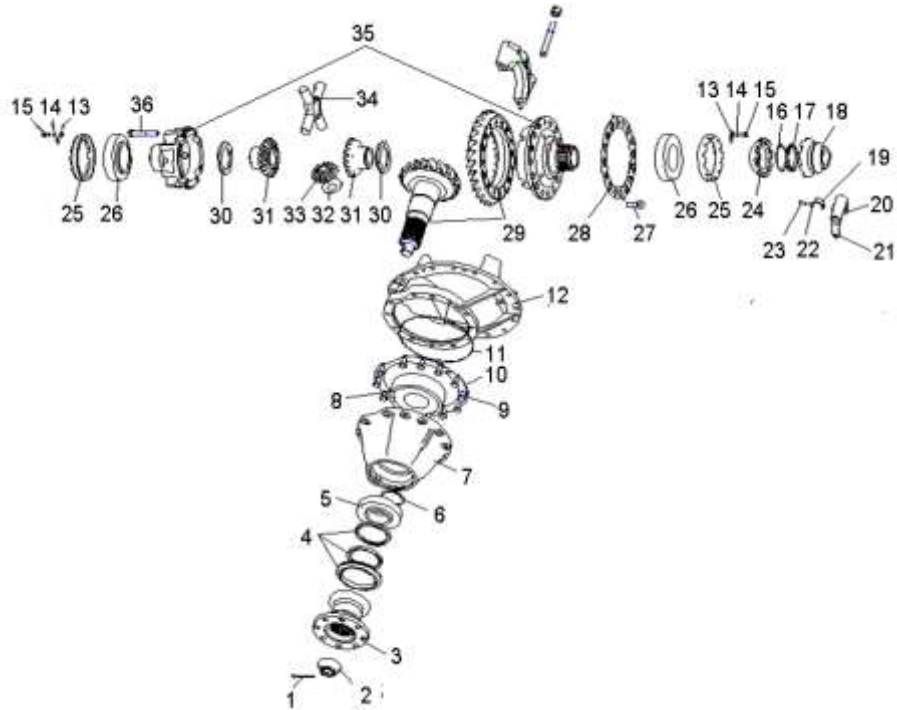




4.03 后桥驱动装置(i=4.42, φ165)/Rear Axle Drive

序号	零部件图号	名称	Part Name	数量	备注
No.	Part No.			Qty	Remark
0	AZ9231320701	后桥中段(i=4.42,φ165)	rear axle drive ass.	1	
1	Q5005055	开口销	Split pin	1	
2	WG79000320013	凸缘螺母	Nut	1	
3	WG9231320110	Φ165凸缘总成	Flange ass.	1	
4	WG9231320001	主减油封总成	Sealing ass.	1	
5	190003326236	圆锥滚子轴承	Roller bearing	1	
6	WG880 320002-15	调整垫片	Shim	1	
7	WG9012320131	轴承座	Bearing seat	1	
8	190003326546	圆锥滚子轴承	Roller bearing	1	
9	Q150B1230TF2	六角头螺栓	Screw	12	
10	WG9012320173-176	调整垫片	Shim	1	
11	WG9012320133	密封圈	Washer	1	
12	199012320098	主减速器壳	Reductor housing	1	
13	WG79000320027	止动片	Retainer sheet	2	
14	Q40308	弹簧垫圈	Spring washer	2	
15	Q150B0816	六角头螺栓	Screw	2	
16	WG3809320158	锁止垫片	Locking shim	1	
17	WG3809320157	圆螺母	Nut	1	
18	WG3809320156	滑动啮合套	Sliding shifting sleeve	1	

4.03 后桥驱动装置(i=4.42, φ165)/Rear Axle Drive

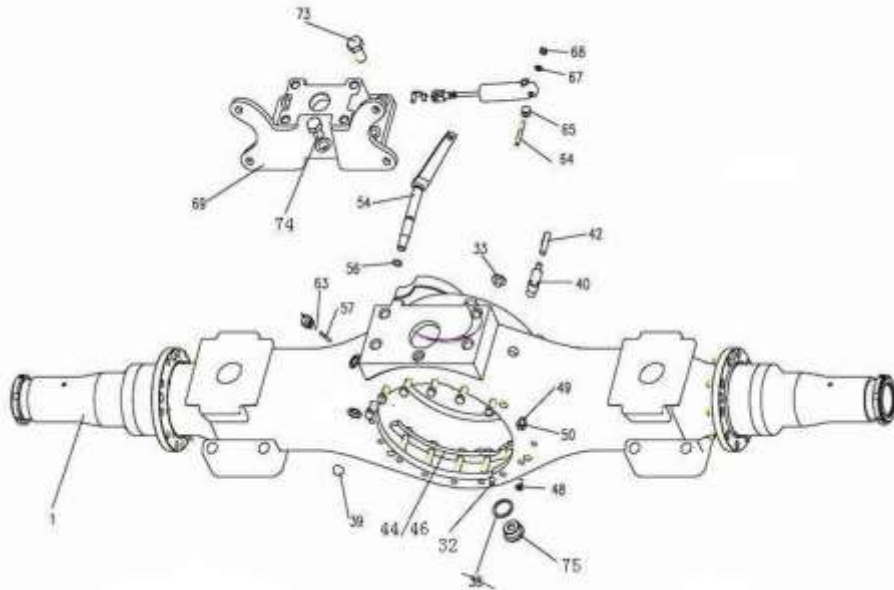


4.03 后桥驱动装置(i=4.42, φ165)/Rear Axle Drive

序号	零部件图号	名称	Part Name	数量	备注
----	-------	----	-----------	----	----

No.	Part No.	名称	Part Name	Qty	Remark
19	WG9012320023	弯板	Angle plate	1	
20	WG1800 320077	拨叉活动块	Block	2	
21	WG9012320014	拨叉	Fork	1	
22	Q340B08	1型六角螺母	Nut	1	
23	Q2800825	开槽锥端紧定螺钉	Screw	1	
24	WG3809320155	固定啮合套	Shifting dog	1	
25	WG3809320159	差速器轴承调整螺母	Nut	2	
26	190003326148	圆锥滚子轴承	Roller bearing	2	
27	Q151B1632TF2	六角头螺栓	Screw	16	
28	WG9114320003	锁片-从动锥齿轮螺栓	Screw	1	
29	AZ9231320911	锥齿轮付 33/26	Pinion and crown wheel	1	
30	AZ9231320154~158	调整垫片	Shim	1	
31	WG9231320151	半轴齿轮	Gear	2	
32	WG9231320153	行星齿轮垫片	Gasket	4	
33	WG9231320152	行星齿轮	Planetary Gear	4	
34	AZ9231320150	十字轴	Spider	1	
35	AZ9231320274	差速器壳	Diff. housing	1	
36	WG9231320169	六角头螺栓	Screw	8	

#### 4.04 中桥桥壳/1st Rear Axle Housing

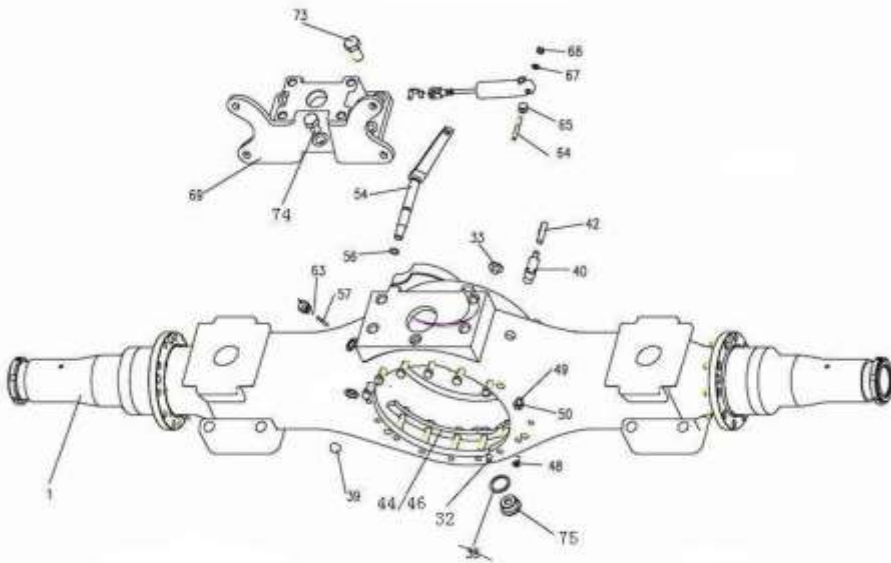


#### 4.04 中桥桥壳/1st Rear Axle Housing

序号	零部件图号	名称	Part Name	数量	备注
No.	Part No.			Qty	Remark
1	AZ9231330588	ST16中桥壳总成	First rear axle housing	1	

29	WG680340013	园螺母(右)	nut	1	
31	1680 340014	园螺母(左)	nut	1	
32	Q5211016	园柱销	Cylinder pin	1	
33	190003962021	锥螺纹内六角螺塞	Screw	1	
39	190003989290	碗形堵塞	Croe plug	1	
40	WG9231330105	通气塞	Breathing plug	1	
42	WG9231330106	橡胶软管	Hose	1	
44	WG9014330146	弓形固定卡总成(下)	Clip	1	
46	WG9014330147	弓形固定卡总成(上)	Clip	1	
48	Q2540820	十字槽沉头螺钉	Screw	4	
49	190003810631	双头螺柱	Stud	4	
50	190003888457	自锁螺母	nut	16	
51	WG2297Y4835	铭牌	Plug	1	
53	190003904529	标牌铆钉--铆钉	Rivet	2	
54	WG9014330126	操纵杆总成	Lever ass.	1	
56	1680M 320015	O型垫圈	O-ring	1	
57	WG69000330008	销	pin	1	
59	WG69000330009	销	pin	1	

#### 4.04 中桥桥壳/1st Rear Axle Housing



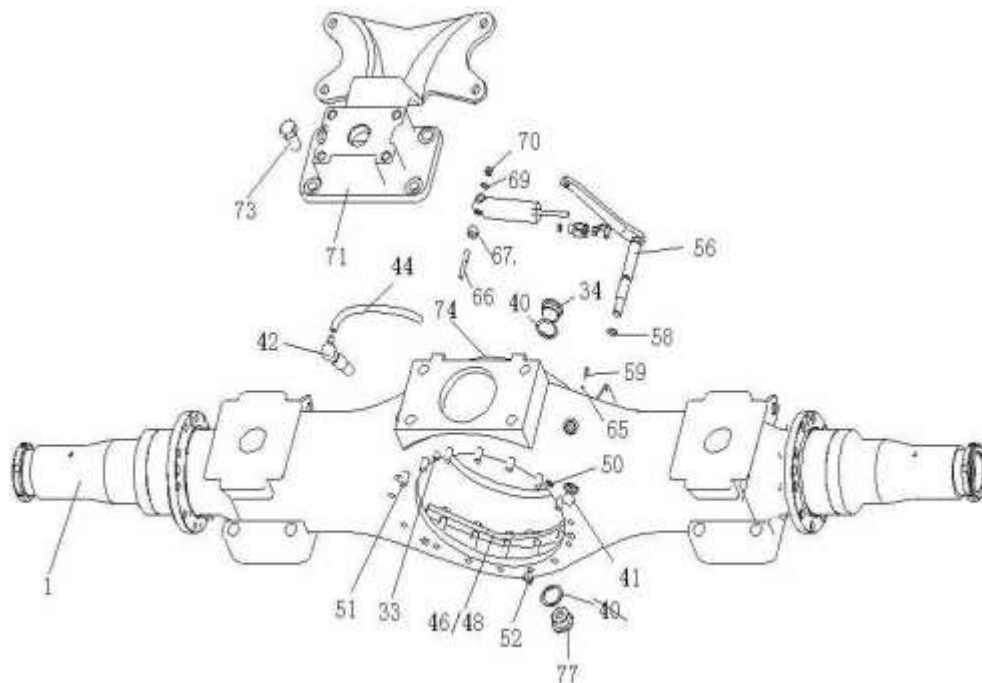
#### 4.04 中桥桥壳/1st Rear Axle Housing

序号	零部件图号	名称	Part Name	数量	备注
No.	Part No.			Qty	Remark
61	WG9100330010	销	Pin	1	
63	Q43705	轴用钢丝挡圈	Snap ring	1	
64	Q1200850F3	双头螺柱	Stud	1	
65	WG61000060084	间隔衬套	Sleeve	1	
67	Q40108	平垫圈	Washer	1	



44	WG9231330106	橡胶软管	Hose	1	
46	WG9014330146	弓形固定卡总成(下)	Clip	1	
48	WG9014330147	弓形固定卡总成(上)	Clip	1	
50	Q2540820	十字槽沉头螺钉	Screw	4	
51	190003810631	双头螺柱	Stud	4	
52	190003888457	自锁螺母	Nut	16	
55	190003904529	标牌铆钉—铆钉	Rivet	2	
56	WG9014330125	操纵杆总成	Lever ass.	1	
58	1680M 320015	O型垫圈	O-ring	1	
59	WG69000330008	销	Pin	1	
61	WG69000330009	销	Pin	1	
63	WG9100330010	销	Pin	1	

#### 4.05 后桥桥壳/ Rear Axle Housing



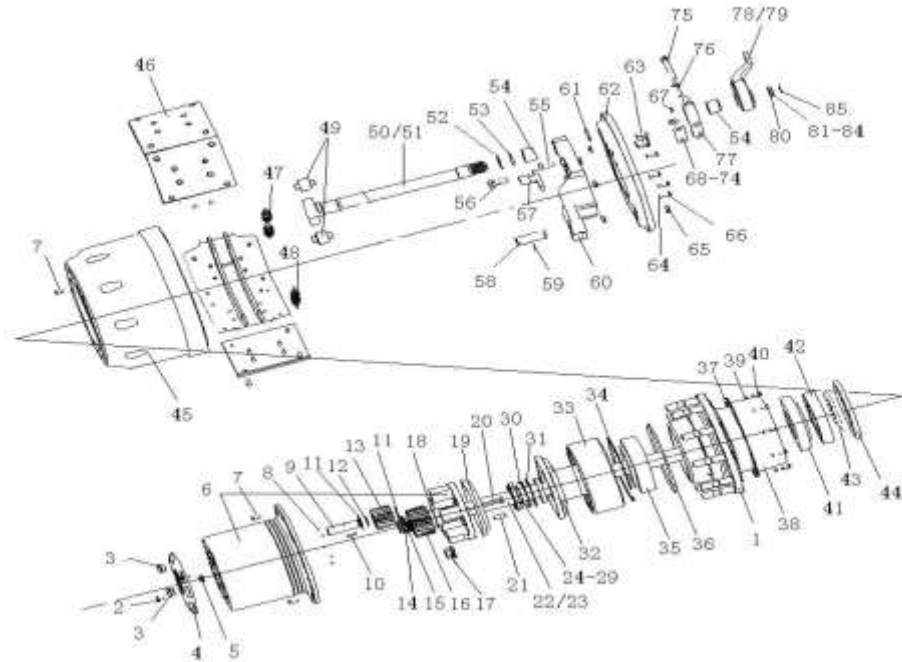
#### 4.05 后桥桥壳/ Rear Axle Housing

序号	零部件图号	名称	Part Name	数量	备注
No.	Part No.			Qty	Remark
65	Q43705	轴用钢丝挡圈	Snap ring	1	
66	Q1200850F3	双头螺柱	Stud	1	
67	WG61000060084	间隔衬套	Sleeve	1	
69	Q40108	平垫圈	Washer	1	
70	Q33208	2型全金属六角锁紧螺母	Nut	1	
71	WG9231340041	气室支架(后桥)	Bracket	1	
73	Q151B2040TF2	六角头螺栓	Screw	4	
74	AZ9231330050	后盖总成	Cover ass.	1	
77	WG9231330015	磁性螺塞总成	Magnet plug	1	



15	WG880 410097	垫圈	Washer	4	
16	WG9012340005	太阳轮 (Z=23)	Helical gear	4	
17	WG9003884160	车轮螺母	Screw	40	
18	WG9012340076	太阳轮垫圈	Washer	4	
19	WG880420027	行星架挡油盘	Oil drip pan	4	
20	Q151C1295TF2	六角头螺栓	Screw	20	

#### 4.06 后桥轮毂及制动器/Hub and Brake of Driving Axle

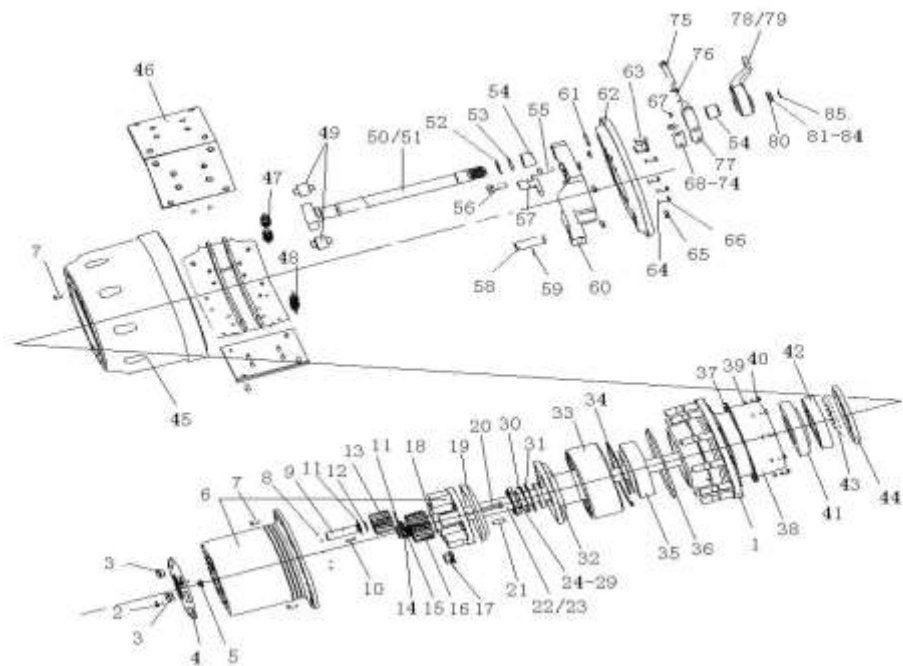


#### 4.06 后桥轮毂及制动器/Hub and Brake of Driving Axle

序号	零部件图号	名称	Part Name	数量	备注
No.	Part No.			Qty	Remark
21	190003901704	园柱销	Cylinder pin	20	
22	WG9231340223	半轴 (左)	Drive shaft -left	2	
23	WG9231340224	半轴 (右)	Drive shaft -right	2	
24	WG680340016	调整垫片(厚0.1)	Shim	2	
25	WG680340017	调整垫片(厚0.2)	Shim	2	
26	WG680340018	调整垫片(厚1.0)	Shim	2	
27	WG680340019	调整垫片(厚1.5)	Shim	2	
28	WG680340186	调整垫片(厚0.5)	Shim	2	
29	WG680340187	调整垫片(厚0.15)	Shim	2	
30	WG680340015	止推垫圈	Ring	4	
31	WG9231340034	止推垫环	Ring	4	
32	WG9112340021	齿圈支架总成	Bracket	4	
33	WG9012340121	内齿圈 (Z=57)	Gear ring	4	
34	WG880420014	轴用挡圈	Snap ring	4	
35	WG9981032222	圆锥滚子轴承32222	Roller bearing	4	
36	WG9012340029	密封圈	Sealing washer	8	
37	WG9012340020	密封垫片	Sealing washer	4	
38	WG9012340021	挡油罩	Cover	4	

39	Q40308	弹簧垫圈	Spring washer	40	
40	Q150B0816	六角头螺栓	Screw	40	
41	WG9231030222	圆锥滚子轴承30222	Roller bearing	4	

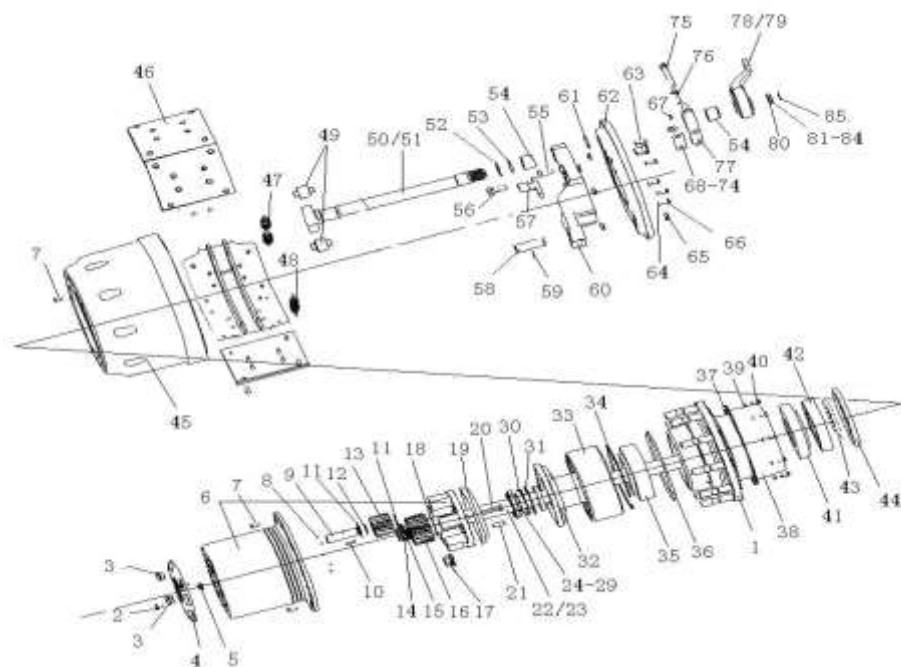
#### 4.06 后桥轮毂及制动器/Hub and Brake of Driving Axle



#### 4.06 后桥轮毂及制动器/Hub and Brake of Driving Axle

序号 No.	零部件图号 Part No.	名称	Part Name	数量 Qty	备注 Remark
42	WG9012340017	隔圈	Spacer ring	4	
43	WG9012340027	密封圈	Sealing washer	4	
44	WG9981340113	轴密封圈	Sealing washer	4	
45	WG9112340006	后制动鼓	Brake drum	4	
46	AZ9231340200	制动蹄带衬片总成	Brake shoe ass.	8	
46,1	AZ9231340203	制动蹄总成	Brake shoe	1	
46,2	WG9200340068	斯太尔制动摩擦片	Brake shoe	2	
46,3	WG9231340068	铆钉	Rivet	16	
47	WG9231342015	回位弹簧	Return spring	4	
48	WG9112340049	回位弹簧	Return spring	8	
49	WG9000340027	滚轮	Roller	8	
50	WG9231340226	制动凸轮轴(左)	Brake camshaft -left	2	
51	WG9231340227	制动凸轮轴(右)	Brake camshaft -right	2	
52	WG880440010	附加垫片	Washer	8	
53	WG880340023	O形密封圈	O-ring	4	
54	WG9100340017	复合衬套	Sleeve	8	
55	Q151B1635TF2	六角头螺栓	Screw	32	
56	Q151B1645TF2	六角头螺栓	Screw	8	
57	AZ9231340556	ABS传感器支架	Bracket	4	
58	199000340064	支销	Pin	8	
59	Q5280624	弹性园柱销	Cylinder pin	8	

#### 4.06 后桥轮毂及制动器/Hub and Brake of Driving Axle



#### 4.06 后桥轮毂及制动器/Hub and Brake of Driving Axle

序号 No.	零部件图号 Part No.	名称	Part Name	数量 Qty	备注 Remark
60	AZ9231340562	制动底板	Brake plate	4	
61	190003933300	轴用弹性挡圈	Circlip for shaft	4	
62	199112340012	制动器防尘罩	Brake cover	4	
63	WG9112340010	ABS传感器输出保护套	Protect rubber	4	
64	Q40308	弹簧垫圈	Spring washer	24	
65	WG880340037	密封圈	Sealing washer	16	
66	Q150B0816	六角头螺栓	Screw	24	
67	AZ9003963030	滑脂嘴总成	Grease nozzle	4	
67,1	AZ9003963010	滑脂嘴帽	Cap of the grease nozzle	1	
67,2	190003963112	米制锥螺纹滑脂嘴	Grease nozzle	1	
68	WG880340031	调整垫片(厚0.1)	Adjusting washer	2	
69	WG880340032	调整垫片(厚0.15)	Adjusting washer	2	
70	WG880340033	调整垫片(厚0.4)	Adjusting washer	2	
71	WG880340034	调整垫片(厚1.0)	Adjusting washer	2	
72	WG3809470031	调整垫片	Adjusting washer	2	
73	WG3809470032	调整垫片	Adjusting washer	2	
74	WG3809470033	调整垫片	Adjusting washer	2	
75	Q151B1490	六角头螺栓	Screw	4	
76	Q151B1445	六角头螺栓	Screw	4	
77	199014340041	凸轮轴支架	Bracket of camshaft	4	
78	WG9100340057	间隙调节臂总成(右)	Slack adjusting device(right)	2	

#### 4.06 后桥轮毂及制动器/Hub and Brake of Driving Axle

75 78/79

